



TECHNO FRAME

Aluminum & Glass Solutions



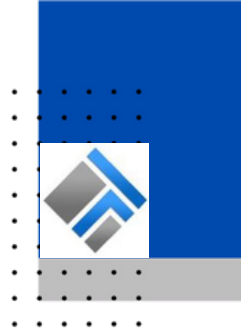
Since 2005 KSA
2013 EGYPT



www.technoframe-egypt.com



TABLE OF CONTENT



1	About the Company	7	Our Expertise
2	Our Mission and Vision	8	Our Projects
3	Our Goals	9	Certifications
4	Our Offered Services	10	Our Partners
5	Our Organization Chart	11	Our Clients
6	Our Factory	12	Our Consultants



COMPANY OVERVIEW

About Us

Our Start was at KSA since 2005 and completing our Success at Egypt from 2013 until now and Counting. TECHNO FRAME is Professional company for aluminum facade

offering a wide range of technical services, leaded by group of highly qualified managerial staff and technical engineers whose expertise in scope.

Our range of products extends from aluminum doors and windows to curtain walls, skylights, louvers as well as as stainless steel, aluminum composite cladding handrails all kinds of architectural metal works

Usage of our scope materials is only a solution to functional, aesthetic and the most suitable performance requirements. We do not limit Our goal to finish any project but to propose solutions in every situation



COMPANY OVERVIEW



About Us

Expanding Beyond Facades

Today, TECHNO FRAME is evolving into a **multi-disciplinary contracting firm**, taking on **main contractor responsibilities** and offering a **complete turnkey solution** that spans:

- Civil Works:** Excavation, structural concrete, finishing, infrastructure, and external works.
- MEP Works:** HVAC, Electrical, Fire Fighting, Plumbing, Drainage.
- Façade & Architectural Works:** Curtain walls, cladding, doors/windows, skylights, and metal works.

Backed by a team of highly qualified engineers and experienced project managers, we deliver high-quality, cost-effective solutions with a client-focused mindset. Our goal is not just to complete projects but to deliver innovative, integrated solutions that exceed expectations.



OUR PROCESS

Mission

Our mission at Techno Frame is to be a leader in the aluminum and glass industry by offering high-quality, customized solutions that blend aesthetics with durability. We are committed to excellence in every project, ensuring customer satisfaction through innovation and superior craftsmanship."

Vision

We envision Techno Frame as the foremost authority in aluminum and glass solutions, renowned for pioneering advancements that redefine architectural possibilities. Our goal is to drive industry innovation while upholding our commitment to environmental sustainability and exceptional customer experience."





OUR GOALS



Goal # 1

Business Growth and
Ex pansion



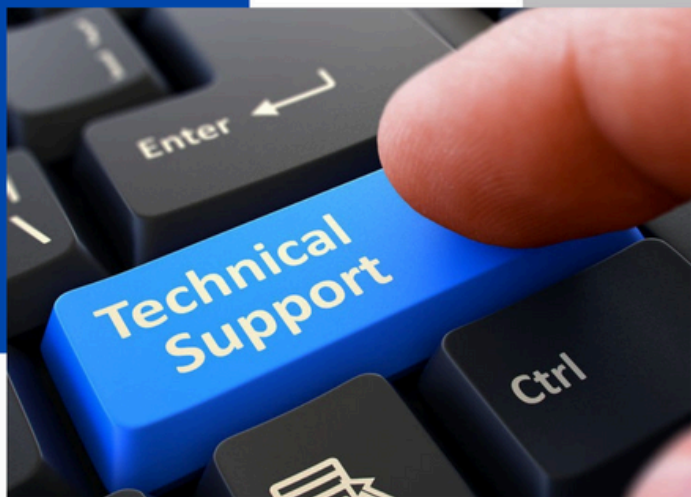
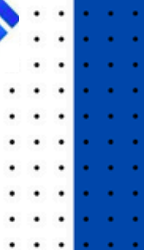
Goal # 2

Customer Satisfaction and
Ex pe r i e n c e



Goal # 3

Innovation and Product
D ev elop ment



OUR OFFERED SERVICES



TECHNICAL SUPPORT

- Engineering Studies.
- Engineering Designs.
- Engineering Estimates.
- Engineering Solutions.



SITE SUPERVISION -

- Project Daily Inspection.
- Shop Drawing Review.
- Project Specs Conformity.
- Safety Compliance.



CUSTOMER SERVICE

- After-Sales Service.
- Estimated Bids.



Our Turnkey Capabilities

Techno Frame –From Facade Specialist to Main Contractor

To meet growing market demands and provide single-source responsibility, Techno Frame now offer **turnkey contracting services** that unify Civil, MEP, and Façade scopes under one umbrella.

Our Contracting Scope Includes:

- **Civil Works**

- * Structural Concrete Works
 - * Excavation, Backfilling & Compaction
 - * Masonry, Plastering, Finishing
 - * External Infrastructure (roads, landscape, site development)

- **Mechanical Systems:**

- * HVAC Systems
 - * Fire Fighting Systems

- **Electrical Systems**

- * Lighting, Power Distribution, Earthing, Lightning Protection

- **Plumbing & Drainage Systems.**

- **Operation & Maintenance**

- * Predictive and preventive maintenance.
 - * Audit services for both electrical and mechanical assets (LV/MV Panels, Transformers, Motors, HVAC.....)



Our Organization Chart



Our Factory

TECHNO FRAME's curtain wall & aluminum windows, doors factory is located in the industrial zone of the 5th District in New Cairo, with a total area of 1800 m² in dimensions of 60*30m, which contains all important equipment for Fabricating aluminum Profiles. Workers cut and assemble the aluminum profiles in process of turning it to a final product, then transport it to the different sites to install them in their final form on the building's façade.





CNC - Cutting Machine

This CNC cutting router is mainly used for cutting aluminum composite panels.

We use CNC machine to create artistic Designs that are used in interior décor or on Building facades, our machine is fast and precise in implementation, any design can be drawn on the engineering drawing software like AutoCAD and implemented through a computer controlled panel to ensure that this graphics are executed accurately.



Automatic Double Head-Cutting Machine

This Double Head-Cutting Machine is a full automatic sawing machine which is designed for the straight or angular cutting operations of large size of aluminum profiles materials by means of double head sawing units equipped with 8 420 mm of saw blades.



Notching Miter Saw

This machine is used for angular cuts or large size drivers of side segments with a 420 mm diameter saw blade lens and can be cut at corners 70°, 80°, 45°, 30°, 22.5°, 15°, 0°, In both the left and right direction, the pivot range is from -70° left to +75° right indefinitely and has an in-front hands protection system during operation as a key condition reflecting the commitment of Tchinovrim to its workers.



Automatic Miter Saw

This machine is used for two purposes; side cutting position and longitudinal cutting position and can be shredded at 80°, 45°, 60°, 67°, 5°, 75°, 90° for both left and right and the rear bar can be adjusted to allow more efficient use of saw blade capacity for flat wide patterns as well as a wide-angle cutting range up to 30° right and 30° left.





End Milling Machine

This machine is manual and used in final milling on FYC and aluminum patterns precisely and specializes in end milling where the aluminum sector is secured by vertical and horizontal air clips and then cut by a saw that has a maximum diameter of 170 mm.



Punching Machine

Power press is a type of machine tool used for punching, cutting, and shaping metal or other materials. It typically consists of a large frame that houses a moving punch and die, which work together to form a specific shape or hole in the material. Power presses can be manual or hydraulic, with hydraulic presses providing greater force and precision. They are commonly used in metal fabrication and other industrial applications. HARSLE is a leading brand within the punching machine market field due to its experience and quality standards, we produce mechanical press, Pneumatic press, CNC turret punch press and other power presses which are used in different metal-working fabrication areas.



Cramping Machine

Aluminum Corner Press: Designed for 90 degrees corner connection of Aluminum profiles with hydraulic system, The machine is designed according to CE directives Clamp squeezing is pneumatic; knife movement is hydraulic. Height of pressing knives, movement of hydraulic pistons and height of profile is millimeter scaled and adjustable. Automatic centering of profile is achieved with pneumatically operated profile centering setsquare and eccentric leaner. As operating process is ended the central setsquare disappears when it returns to the initial position. Powerful hydraulic system exists.





Our Expertise

Our Aluminum & Glass Products



Curtain Walls

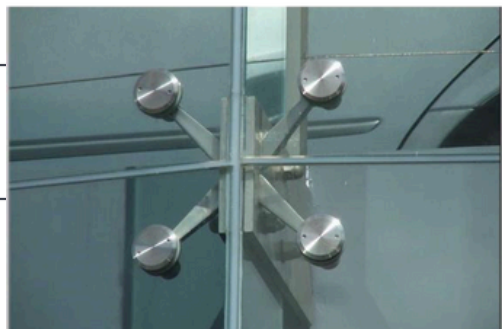
Frameless Glazing

Aluminum Cladding

Aluminum Louvers

Aluminum Windows and Doors

Skylights And Canopies





Our Expertise

Our Aluminum & Glass Products

Curtain Walls

Frameless Glazing

Aluminum Cladding

Aluminum Louvers

Aluminum Windows and Doors

Skylights And Canopies

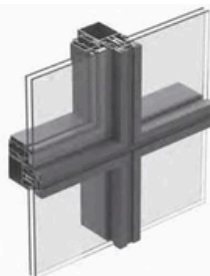


Technical Characteristics

ACACIA 50

Shading System

- Designed to provide effective natural ventilation solution and create a healthier indoor climate.
- Can be applied in different ways such as natural ventilation, sun shading and simple Fixed-Sliding-Hinged-Folding shutters systems.
- Several types of slat/blades are available vary in shapes, sizes and installation methods.

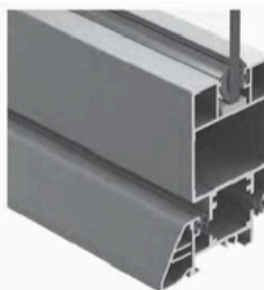


Technical Characteristics

PANORAMA 62

Curtain Wall System

- Wide variety of profiles (mullions and transoms) with different dimensions and moment of inertia to fulfill the structural requirements.
- Available in 3 different glazing appearances, conventional curtain wall, full structural glazing and semi structural glazing (same appearance for fixed and opening panels internally & externally).
- Improved static values due



Technical Characteristics

SONATA 45

Hinged System

- Wide variety of frames and sashes in design and aesthetic shapes that match the architectural trends while offering a full range of accessories for various types of openings.
- Offers a solution for every standard application for inward and outward opening windows and flush doors.
- Offers integrated inward or outward hinged doors solution with automatic ejection system.



Technical Characteristics

JUMBO 100

Sliding System

- Wide variety of frames and sashes in design and aesthetic shapes that match the architectural trends.
- Available in the double or triple track design, structures with up to six leaves.
- Used for doors and windows with large openings.
- Wide range of locking systems including multi locking points and anti-lift blocks.

Frame | Depth 74 mm. to 134 mm.



Our Expertise

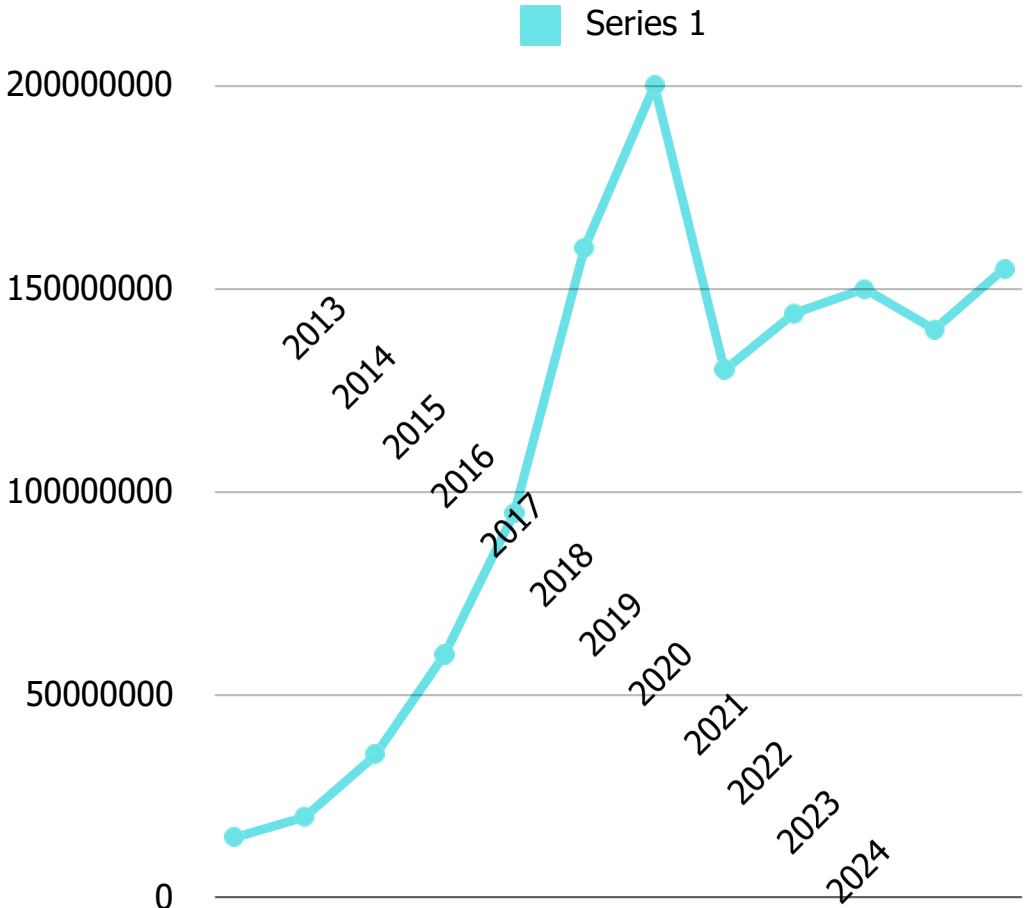
Our Aluminum & Glass Products





COMPANY PROJECTS

Financial Revenue From 2013

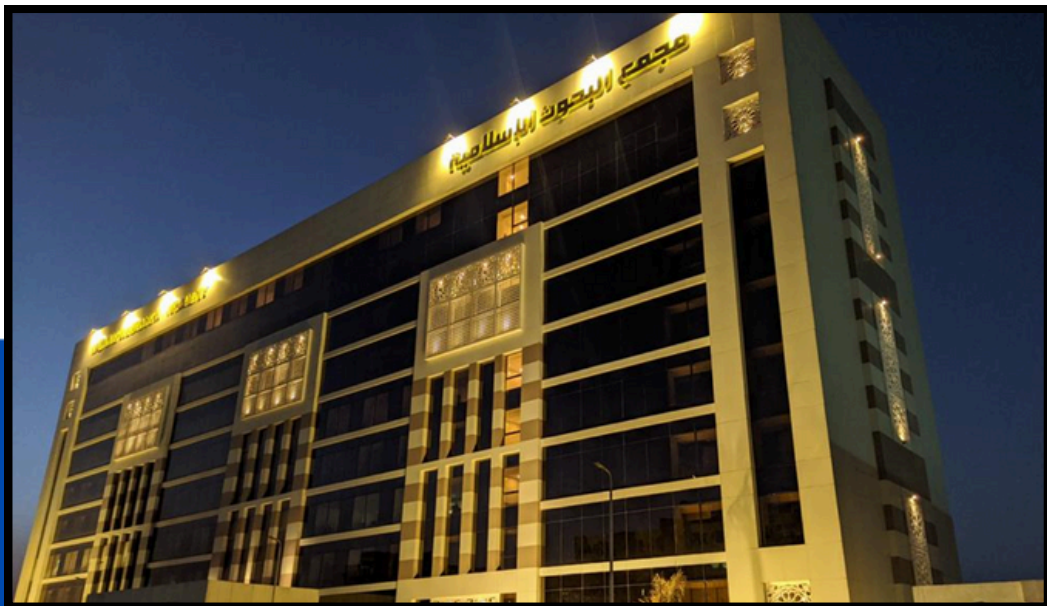


NOTE: This Chart shows the Financial Revenue For All of Our Projects (Administrative-Commercial-Hospitals-Residencial - Road Service)



Our Project *Islamic Research Academy*

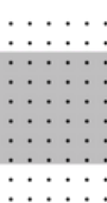
client : Al- Azhar
location : Nasr city - Egypt



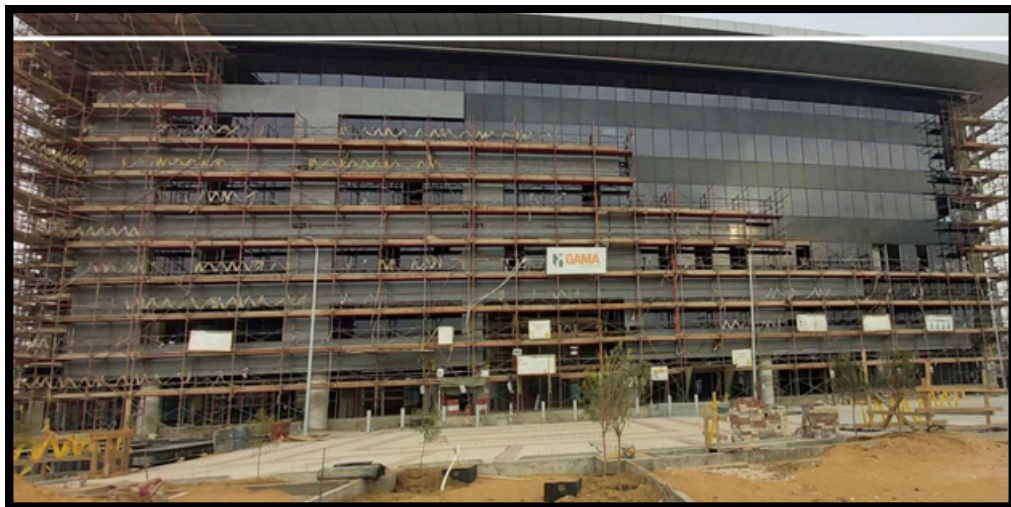


Cairo Festival City

client : El-Futtain Group



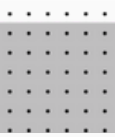
location : New Cairo - Egypt





Markers Mall

Client: Markers Marks



location : New Cairo - Egypt





life mall
Client: I.C.Group

life mall
location : New Cairo - Egypt





silicon 21 bulding

Client:silicon company

location : New Cairo - Egypt





Administrative
Kayan Octagon Building
Client: Dar El Alamia

Location : Admin. Capital





Residential
SODIC
CLIENT : SODIC
Location : AL -SHOROUK





Residential **UP TOWN CAIRO**

Client: Arab tec & Dmc

Location : El Mokatam Cairo





Residential **Celia Compound**

Client: Talat Mostafa
Location : New Capital





AL -Galala university

Client : Al saleh contracting co.

Location : Ain El Sokhna - Egypt





Palm city

client : AL - Nakheel project

Location : ring road





clups AL TAYARAN CLUB

CLIENT: Magdy CO.



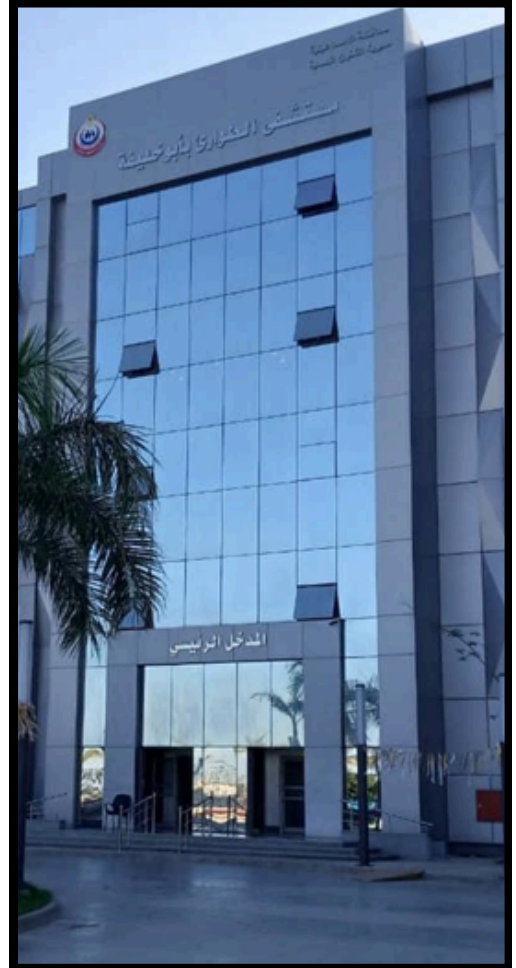


Hospitals

ABU KHALIFA

Client: Tower CO.

Location : Port Said Road- Egypt





Ismailia Medical complex

Client : El - Saweed co .

Location : Ismailia





port - said hospital

Main contractor: Tolba com.

location : port- said





Alamin hospital

Client : El - Saweed co .

Location : Alamin - EGYPT





AL- salam hospital

Main contractor: Orascom Co.

location : AL maadi





Marina Building

Client : Suiz Canel Association

Location : Ismailia - Egypt





Road Services

PORT Saud tollstation

Client : AL - Manadily co.
Location : Port Said- Egypt



BRT

Client: Samcrete CO.
Location : Road Cairo- Egypt





Road Services Al - Galala Tollstation

Client : National Roads CO.
Location : Ain El Sokhna - Egypt





Certificate of Registration

This is to Certify that the Quality Management System of

TECHNO FRAME COMPANY

26 MOHAMED EL-MAQRIFI - PARALLEL TO HASSAN EL-MAMOUN
NASR CITY - CAIRO - EGYPT

Has been assessed and found to conform to the requirement of

ISO 9001:2015

This certificate is valid for the following scope

EXPORT, CONTRACTING AND GENERAL SUPPLIES.

Certificate No.: 241031012002

Initial Registration Date: 31.10.2024

Issuance Date: 31.10.2024

Date of Expiry* : 30.10.2027

1st Surveillance Due : 30.09.2025

2nd Surveillance Due : 30.09.2026

Director: *Walid M.*





Certifications



MCC

شركة المناديل للمقاولات المعمارية والتجارة

AL MANADILY CONTRACTING CO.



خطاب شكر

تتقدم شركة المناديل للمقاولات بشكر
المصرية السعودية لتقنية الواجهات الالومنيوم (تكنوقريم)

- وذلك على قيامها بتنفيذ كافة الاعمال الخاصة بشركتنا وذلك تحت اشراف الشركة الوطنية
لإنشاء وتنمية وإدارة الطرق . تتضمن اعمال التجاليد والواجهات الزجاجية ، والكبرتن وول
، والشبابيك ، الأبواب الالومنيوم والاسرائلس متمثلة فى المشاريع التالية:
- ١- محطة تحصيل رسوم بمحافظة بوسعيد
 - ٢- محطة تحصيل رسوم ابو رواش بمنطقة ابو رواش بالجيزة والمباني الادارية الخاصة بها.
 - ٣- كافيتريا فرسان بطريق الاسماعيلية.
 - ٤- محطة وقود شيل اوت ١ والمباني الادارية الخاصة بها بطريق اسكندرية الصحراوي
 - ٥- محطة وقود شيل اوت ٢ والمباني الادارية الخاصة بها بطريق اسكندرية الصحراوي
 - ٦- الطريق الدائرى الاقليمى ١ ، ٢ ، ٣ .

و ذلك طبقا للمخططات المعتمدة والجدول الزمنى وبجودة عالية .
متمنين دوام النجاح و التوفيق.

وهذه شهادة منا بذلك ،،،

المدير العام

المهندس/ مجدى المناديل



Certifications



Cairo Festival City كازو فستيفال سيتي

Dear TECHNO FRAME COMPANY manager,

My special thanks to your company and your team for the wonderful works you did on **Cairo Business Park Buildings (Al-Futtim) Project**. We are delighted with your works and especially appreciated your technical support team. It is a joy for us to work with such dedicated and talented company. We are proud to welcome satisfied clientele and look forward to many other projects of working together in the future.

Best regards,

Awsam Hassanien

Sr. Project Manager



مجموعة العقارات

شارع طه حسين - جنوب القاهرة الجديدة - التجمع الخامس

ت. ٠١١ ٤٤٤ ٤٤٤ - القاهرة الجديدة - مصر - الت. ٠١١ ٤٤٤ ٤٤٤ - الفاكس: ٠١١ ٤٤٤ ٤٤٤ - www.festivalcitycairo.com



Certifications



Ref. No: LTR/23/05112019/TECHNOFRAME

M/S: TECHNO FRAME ALUMINIUM & GLASS SOLUTIONS

PROJECT: NEW ALAMEIN CITY

TO WHOM IT MAY CONCERN

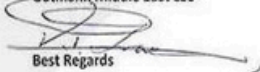
We hereby confirm that approved fabricator and installation of Gutmann Middle East LLC for above- mentioned project is Techno Frame Aluminium and Glass Solutions.

Our support for Techno Frame Aluminium and Glass Solutions with offices at 4 Almaza St., from el thawra St., Heliopolis, Cairo, Egypt represented by Mr. Ahmed Hamdy Salah, on this project related to Gutmann Systems will be:

- ✓ Allowing the use of Gutmann design and technical support during the design and the engineering process.
- ✓ Allowing the purchase of Gutmann Systems including (Aluminium, Accessories and Hardware).

Should you require any further information, please contact the undersigned.

Gutmann Middle East LLC


Best Regards

Peter Grove
Business Development Director

GUTMANN Middle East LLC
Dubai Investment Park 2
P O Box 54503
T: +971 (0) 885 3326 / +971 (0) 808 0500
E: info@gutmannme.com | www.gutmann.me

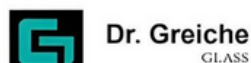
Trading License: 602337
UAE TRN: 100285992200003





Our Partners

Glass Suppliers



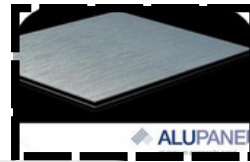
Rockwool & Acc. Suppliers





Our Partners

Cladding Suppliers



Silicon Suppliers



Aluminum Suppliers





Our Clients



ORASCOM
CONSTRUCTION

HASSAN ALLAM
HOLDING

INERTIA

SG
El Soudan Group

 **IC Group**

 **GAMA**
CONSTRUCTION

ACC
ARABIAN CONSTRUCTION CO.


arabtec

 **SOLID**
CONSTRUCTION

 **GIECO**
www.gieco.com.eg

 **SODIC**


Al-Futtaim

 **SAMCRETE**
Investments


SQUARE


FMAAR

 **Tower**
Construction

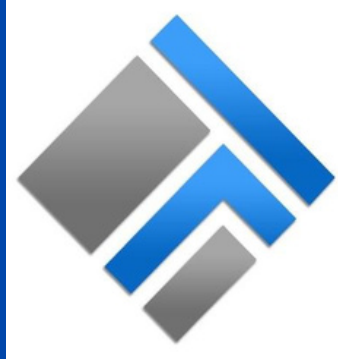

AL-ALAMIA
CONSTRUCTION & BUILDING


شركة وادى النيل للمقاولات
والاستثمارات العقارية



Consultants





TECHNO FRAME

Aluminum and Glass Solutions

26 Mohamed El Maqrefy st, Parallel El Mamoon ST, Nasr City, Cairo

info@technoframe-egypt.com

call US :02-26774930/ 01119000191

www.technoframe-egypt.com